

2017 VSAE Educational Symposium & Expo

October 5, 2017, Greater Richmond Convention Center

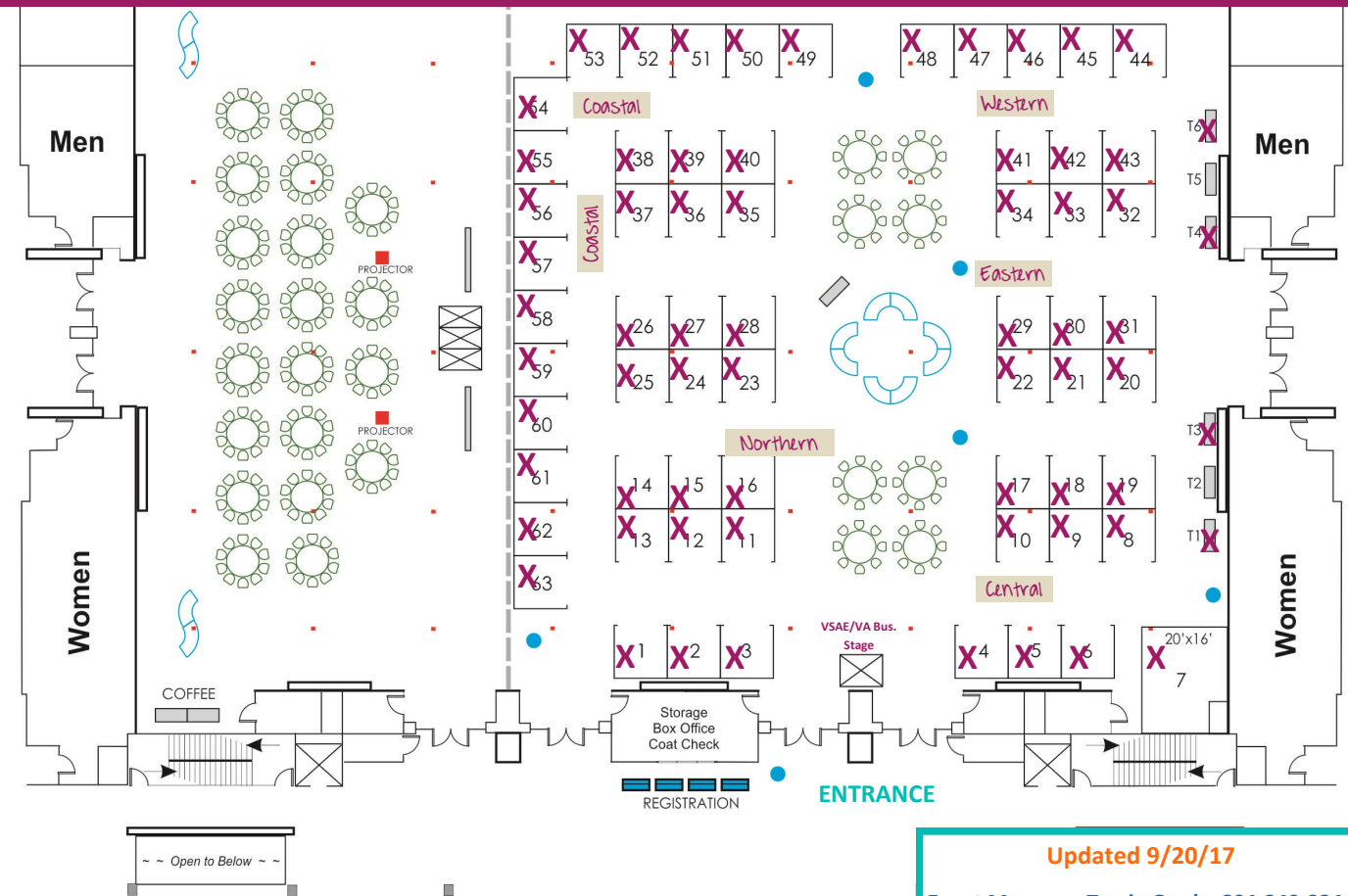
- | | |
|--------------------------|-------------------------|
| 1. Powell Kohne | 38. Map Dynamics |
| 2. Virginia Business | 39. Fburg Expo & CC |
| 3. Belmond | 40. Fburg Reg Tourism |
| 4. Omni Homestead | 41. Stonewall Jackson |
| 5. Omni C'ville/Rich. | 42. Dunmar |
| 6. AP Group/Aflac | 43. Ren. Portsmouth |
| 7. Blue Ridge A/V | 44. VA Int'l Raceway |
| 8. Richmond Tourism | 45. Boar's Head |
| 9. Richmond Tourism | 46. George Wash. Hotel |
| 10. Grtr Rich Conv Ctr | 47. Visit Norfolk |
| 11. Visit Fairfax | 48. Visit Norfolk |
| 12. Visit Fairfax | 49. Dbltree C'ville |
| 13. RealTime Acctg | 50. Lynchburg CVB |
| 14. Airlie | 51. Lynchburg CVB |
| 15. Visit Fairfax | 52. Keswick Hall |
| 16. Visit Fairfax | 53. Greenbrier |
| 17. Richmond Tourism | 54. Sanderling Resort |
| 18. Richmond Tourism | 55. Tides Inn |
| 19. Richmond Tourism | 56. Chesapeake CVB |
| 20. Wytheville | 57. Visit VA Blue Ridge |
| 21. Hampton CVB (PP) | 58. Visit VA Blue Ridge |
| 22. Hampton CVB | 59. Visit Loudoun |
| 23. NN Tourism (PP) | 60. Visit Loudoun |
| 24. NN Marriott | 61. Visit Loudoun |
| 25. Hol. Inn Valley View | 62. Hilton Winchester |
| 26. VA Beach CVB | 63. VA Tourism Corp. |
| 27. VA Beach CVB | VSAE - Entrance |
| 28. VA Beach CVB | T1. MemberClicks |
| 29. Kingsmill | T2. _____ |
| 30. Gtr. Wmsburg | T3. Results Direct |
| 31. Great Wolf Lodge | T4. James River AV |
| 32. Exhibits, Inc. | T5. _____ |
| 33. Busch Gardens | T6. Conf. Solutions |
| 34. Colonial Wmsbrg | |
| 35. VA Beach CVB | |
| 36. VA Beach CVB | |
| 37. VA Beach CVB | |

Exhibit Hall Booth Prices: VSAE Members Non-Members **RESERVE SPACE PRIOR TO MAY 12 TO SAVE \$50 (price as listed).**

Don't miss this event! Annual Sell Out happens before July!

	By 5/12	After 5/12	By 5/12	After 5/12
Front Entrance (#s 3 & 4)	\$930	\$980	\$1040	\$1090
Corner (traffic 2 sides)	\$880	\$930	\$990	\$1040
Aisle Booth (traffic 1 side)	\$830	\$880	\$940	\$990
Table (not a booth) T3-T8 = 6'x2' table.	\$880			\$990

Booths are 10'Wx10'D, include pipe/drape & a 6'x2' table
 Booths fees include two (2) people/booth
 One (1) additional person can be added for a fee.
 Available after all other space is sold or by Expo Committee's approval.



Please note:

- ◆ Booths are placed based on groups, contract and payment receipt.
- ◆ All booths are carpeted.
- ◆ Room reservations are available at the Hilton Rich. Downtown. bit.ly/ExpoRm17
- ◆ Planning documents are now available at vase.org, Partners & Sponsors tab, Exhibitor Forms
- ◆ Your confirmation is your emailed receipt of payment.

Updated 9/20/17
Event Manager, Tracie Grady, 804-249-2244
tracie@vsae.org
Booths are SOLD OUT.
There are still a few table tops Available.